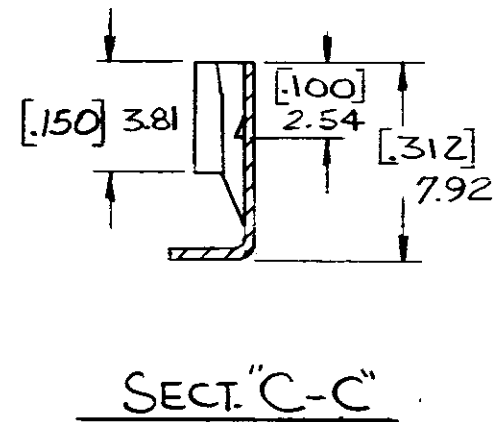
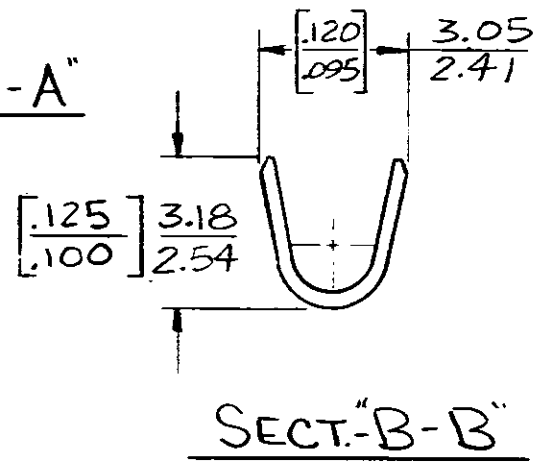
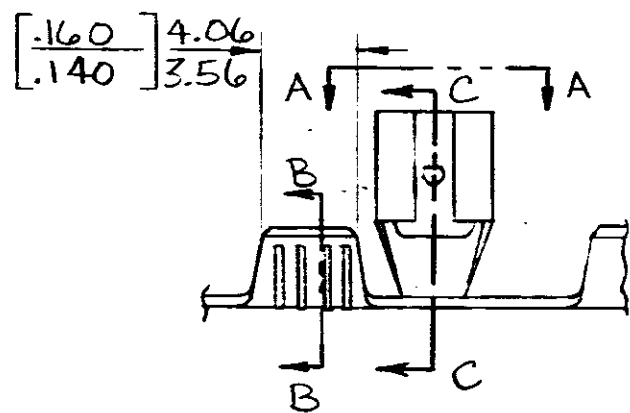
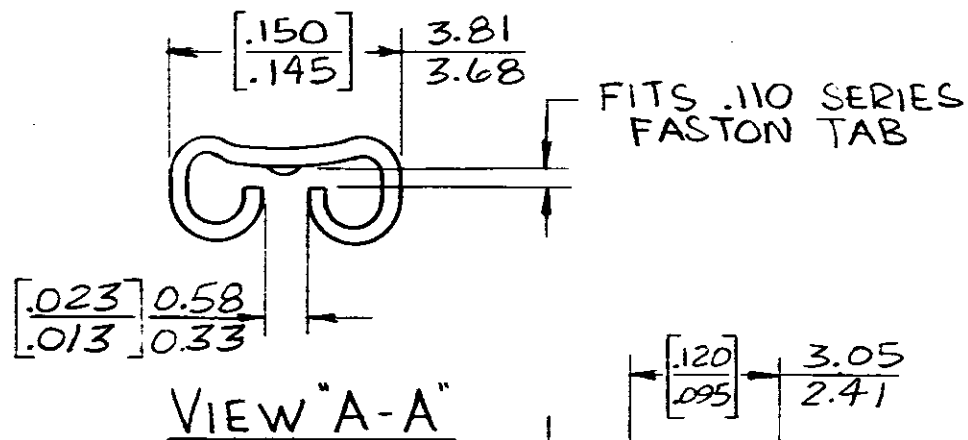


THIS DRAWING IS UNPUBLISHED. RELEASED FOR PUBLICATION . 19

© COPYRIGHT 19 BY AMP INCORPORATED, HARRISBURG, PA. ALL INTERNATIONAL RIGHTS RESERVED. AMP PRODUCTS MAY BE COVERED BY U.S. AND FOREIGN PATENTS AND/OR PATENTS PENDING.

REVISIONS					
REV	ZONE	LTR	DESCRIPTION	DATE	APPROVED
A		A	RELEASED	2/2/83	JR/10M
B		B	REVISED	5/9/84	SR/010
C		C	REVISED AF0697	11/16/84	SR/
D		D	REVISED	4-1-85	SR/
E		E	REVISED AF 1115	7/25/85	JR/61
F		F	REVISED AF 1514	12/9/85	SR/SS



NOTE:

- 1 DIMENSIONS IN BRACKETS ARE IN INCHES
- 2 CONTINUOUS STRIP ON REELS

INSERTION/EXTRACTION REQUIREMENTS	1ST ON MAX (RES)	1ST OFF
TEST TAB - 62061-1	E	3

METRIC

[22-16] 0.5 - 1.4 mm ²	#	[.020 ^{±.001}] 0.51 ^{±0.02}	63233-1
WIRE SIZE	INSULATION RANGE	TAB. THK	PART NO
UNLESS OTHERWISE SPECIFIED DIMENSIONS ARE IN INCHES - MM TOLERANCES ON: DECIMALS [±.015] 0.38 ANGLES ±	CONTRACT NO DR <i>JR</i> 7-28-82 CHK <i>G. Yetter</i> 7/29/82	AMP AMP INCORPORATED Harrisburg, Pa.	
MATERIAL [.012] 0.30 BRASS	APPD <i>C. Meyer</i> 7-30-82 APPD <i>V. P. ...</i> 11-16-82	NAME .110 FLAG FASTON RECEPTACLE	
FINISH PRE-TIN	DSGN APPD OTHER APPD	SIZE B	FSCM NO 00779
		DRAWING NO 63233	
		SCALE #	SHEET